

## A6 Series (Central Payment Station)



Evoxen A6 Series (Central Payment Station) is a special series being launched for central payment processing. It can be used for collecting parking fees based on hourly or fixed rate. It also supports multiple special endorsement rates.

The A6 Series works with the Evoxen Series for entries and exits processing of the car park. It is specifically designed for affordable, easy maintenance and low operating costs. Ticketing and collection logic can be configured with ease without any programmatic dependence from vendor. This gives innovation to your business at your own fingertips.



*Modular & structured design to allow fast and easy Installation and maintenance*



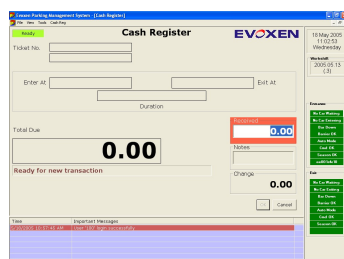
*Programmable keyboard that's customized for simple and easy operation needs.*



*Handheld scanner to scan ticket barcode for payment, re generate receipt, endorse and cancel ticket*



*Desktop VFD fee display to provide patron clear view for the fee to be paid at the counter*



*User-friendly interface which is designed specially to match the current skill level of most cashiers in the industry.*

**Central Payment Station**

Parking comes  
*alive*

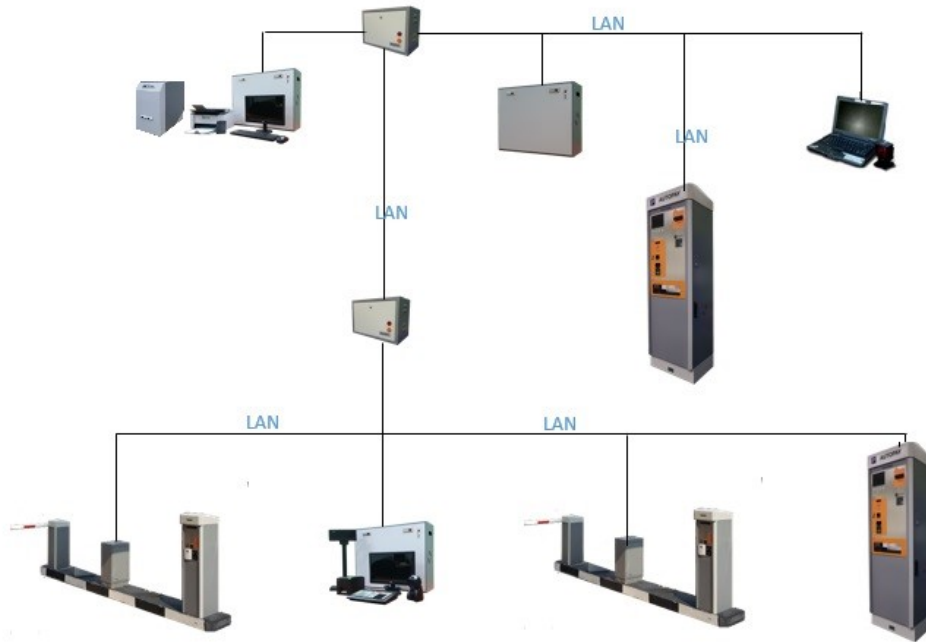
**Optional**

- Cash Drawer
- Season Parking Module
- Desktop Laser Barcode Reader
- Ticket Replacement Issuer Machine
- Central Management Console

Description	Data
Input Voltage / Current	230V ± 10% / 2.5A
Chassis	Powder coated steel housing
Dimensions	69cm (W) x 21cm (D) x 54cm (H)
Cooling System	Filtered housing with heavy-duty fan
Temperature	+5°C to +45°C for indoor installation

**Features**

- Simple and easy to operate
- Ease of Rate Package setup
- Definable block rates within a pre-defined schedule
- Multiple endorsement rates packages can be defined
- Intelligent and flexible calculation (automatic) for maximum/minimum rate
- Multi ticket collection
- Season parking collection
- Manual overriding process for payments/tickets
- Flexible validation
- Shift maintenance
- Collection Reports
- Option to co-exist with Evoxen Autopay Station



**Logical Layout diagram for Central Payment Station**

Please contact:



[www.evoxen.com](http://www.evoxen.com)

Technologies and component described above are either covered by existing patents or patent applications are in progress  
All other brand and product names, photo are registered trademarks & copyrights of their respective owners.  
Evoxen acknowledge all third party trademarks in this document

\*All photo and picture above is for illustration purposes only  
Evoxen reserve the right to change specification without prior notice

**Product Specification**

